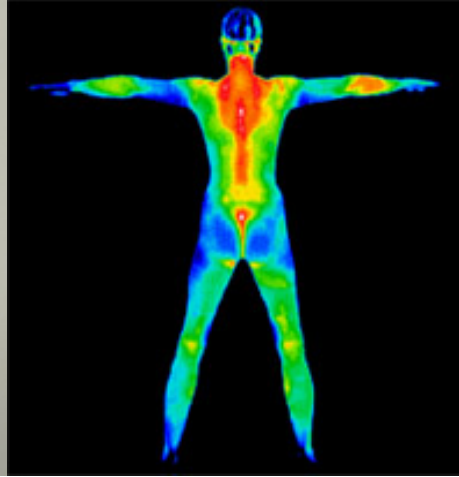


Join us for the 7th Hyogo Science E-café: Factors influencing the perception of temperature

Hosted by the Hyogo Science Coalition
and the Kobe University Science Shop



NESCAFÉ Sannomiya

〒651-0087 兵庫県神戸市中央区御幸通7丁目1-15
7 Chome-1-15 Gokodori Chūō-ku, Kōbe-shi, Hyōgo-ken 651-0087

Location: 5-minute walk from Sannomiya Station

Monday, April 25th 18:30 –20:30 800円

There are numerous factors that influence our perception (知覚) of temperature including sex, age, acclimation (順化) or fitness status to name a few. But regional differences in thermal sensation to a hot or cold stimulus are often limited to male participants, in a rested state and cover minimal locations across the body. In this presentation, Dr. Nicola Gerrett will present information explaining why data collected on males cannot be generalised for females and the influential role exercise has on our perception of temperature.

Learn about science and practice English!

After the presentation, we will have a discussion
over café drinks, sandwiches and sweets.
Native speakers will be there to help!

Register by Friday, April 22nd.

To register e-mail your name to The
Kobe University Science Shop at:

Space is limited to the first 30 people

HSE-CAFE@RADIX.H.KOBE-U.AC.JP

お申し込みの際お送りいただけます個人情報は、この催しの運営管理にのみ利用させていただきます。Any information you provide will only be used for the organization of this event

Find us on Internet! “Hyogo Science Coalition”
プレゼンテーションを含め日本語による説明もあります

